

PENNSYLVANIA ANGUS ASSOCIATION

CELEBRATING OVER 60 YEARS AS AN ASSOCIATION

www.paangus.org

March, 2019

INSIDE THIS ISSUE :

***PA PERFORMANCE TESTED BULL
TEST RESULTS / SALE INFO 3/29/19***

***FINEST FEMALE SALE 3/29/19
INFO INSIDE***

NEWS! NEWS! JUNIOR NEWS!



America's Most Exciting Angus Female Sale



The Pennsylvania Angus Association

Presents:

The 26th Annual

PENNSYLVANIA'S FINEST FEMALE SALE

Friday • March 29, 2019

Approx. 2:30 pm • Following Bull Test Sale

Held at the Livestock Evaluation Center, PA Department of Agricultural
Pennsylvania Furnace, PA

SELLING 50 HAND SELECTED LOTS!

Productive Cow Calf Pairs • Bred Heifers • Elite Show Heifers

Sale Sponsored by: Pennsylvania Angus Association

Sale Chairman: Gene Trowbridge 570-905-4378

For your free reference sale booklet, contact anyone in the office of the Sale Managers, TOM BURKE, KURT SCHAFF, JEREMY HAAG,
AMERICAN ANGUS HALL OF FAME at the WORLD ANGUS HEADQUARTERS, Box 660, Smithville, MO 64089 • Phone 816/532-0811 •
Fax 816/532-0851 • email: angushall@angushall.com • angushall.com



**2019 PA ANGUS ASSOCIATION
OFFICERS AND DIRECTORS**

President

Chad Cash
983 Wetherburn Dr. York, PA 17404
717-779-0614

chadcash2@comcast.net

Vice-President

Greg McKean
193 E. Zahniser Rd. Mercer, PA 16137
greg@angus.us

Secretary

Jamie Brozman
354 Township Line Rd. Nazareth, PA 18064
Phone: 484-221-3455
justenuffangus@gmail.com

Treasurer

Brad Bishard
1787 Seven Valleys Rd. York, PA 17408
Phone: 717-792-9268
bradbishard@hotmail.com

Directors

Ryan Nolt	Jacob Yohe
Jim Kuhn	Deric Horting
Keith Rooker	Del Voight
John Nichols	Mindy Seese
Tim Livingston	Kyle Grim
Butch Otto	Dale Rains

Advertising Rates

Full Page	\$100.00
½ Page	\$75.00
Business Card	\$100.00/year
E-blast	\$25.00

**Next Deadline 5/1/19 to place advertising,
submit news, or an editorial comment contact:**

Jamie Brozman – 484-221-3455
justenuffangus@gmail.com

**PA ANGUS BOARD OF DIRECTORS
MEETING PRIOR TO THE BULL SALE
MARCH 29, 2019**

(Approximately 10:00 a.m.)
AT THE LIVESTOCK EVALUATION CENTER, PA
FURNACE, PA., IN THE CONFERENCE
ROOM, room under the bleachers in the sale
arena.

**2019 PA ANGUS ASSOCIATION
MEMBERSHIP (NEW/RENEWAL)**

Please complete this form - PLEASE PRINT !!

OWNER

FARM NAME

ADDRESS

CITY/STATE/ZIP

PHONES-HOME/CELL/FAX/FARM

EMAIL/WEBSITE ADDRESS

COUNTY

_____ \$35 – ONE YR FARM MEMBERSHIP
_____ \$2 – LADIES AUXILIARY MEMBERSHIP
_____ \$5 – JUNIOR LIFETIME MEMBERSHIP
(THRU AGE 21).

PLEASE INCLUDE JR NAME & BD

_____ **TOTAL MEMBERSHIP DUES**

_____ Business Card Ad, Newsletter \$100/yr

_____ **TOTAL ENCLOSED**

Make check payable to PA ANGUS ASSOCIATION
mail to Jamie Brozman, Secretary,
354 Township Line Rd. Nazareth, PA 18064;
484-221-3455
Justenuffangus@gmail.com



Thank you

Lisnageer Farm

Bill and Cheryl Fairbairn

for their VERY generous
donation to cover the Beef
for the 2019 banquet it was
EXCELLENT!

The Atlantic National ROV Angus Show and Junior Preview Angus Show will be held May 22 – 26, 2019 at the Maryland State Fairgrounds, Timonium, MD. If you exhibited last year you will be receiving an information packet by postal mail. If you are a new exhibitor, please contact Harry H. Bachman – Show Manager at bachhuct@lmf.net with your postal information and a packet will be mailed to you.



Message from our President



Good Evening Angus Breeders,

Calving season is in full swing. I'm writing this letter after drying off a calf this evening and the temperature is in the single digits. These Angus cows amaze me when they lay down and calve in this weather and the calves get up nurse and thrive in this cold weather. I wish everyone a successful calving season and let's hope for an early Spring.

With the March newsletter comes the results from the PA Bull Test. I would like to congratulate James Shipman from Shipman Farms in Sunbury, PA for having the high indexing bull this year. There will be 64 bulls for sale on March 29th with over half being designated as calving ease sires. Along with the PA Bull Test, there are several angus breeders with bulls for sale private treaty and some with bull sales. Please look in this newsletter for more information. If your looking for an Angus bull, you can find one in Pennsylvania.

Our juniors will have participated in the MAJAC show by the time you get this message. For juniors thinking of getting more involved, this is a great early show. While the show is very competitive, the opportunity to meet other juniors is awesome. Look to the next newsletter for more information.

The PA Finest Females Sale will take place March 29th following the Pa Bull Test Sale. There are over 50 lots cataloged. If you are looking to expand your herd or your genetics, this is the place to come. For more information, please reach out to our Sale Chairman, Gene Trowbridge at 570-905-4378.

Here are a few thoughts as we get to the end of winter and the beginning of Spring. Look at our February newsletter and read the article from Michelle Arnold, University of Kentucky Extension. I would concur with her thoughts about our forages from 2018. I've tested several hay samples and they are all lower in protein and

energy than expected. Some are low enough to cause the problems she discusses. If you have a good amount of hay, get it tested to make sure you ration is balanced for your Spring calving cows. It's not that expensive.

Sincerely,

Chad Cash, President, PA Angus Association



Block & Bridle Club
The Pennsylvania State University
Department of Animal Science
324 William L. Henning Building
University Park, PA 16802-3508

The Penn State Chapter of the National Block and Bridle Club is proud to announce the 102nd Little International, a Department of Animal Science tradition. The 102nd Little International will be held on April 6, 2019 beginning with Opening Ceremonies in the Snider Agricultural Arena at 8:00 AM.

2019 Little International Sponsorship & Patron Form

SPONSORSHIP: _____
DONOR: _____
ADDRESS: _____
PHONE NUMBER: _____

Platinum Sponsor \$500 and Up

Gold Sponsor \$100 - \$499

Silver Sponsor \$50 - \$99

Bronze Sponsor \$25 - \$49

Blue Ribbon Sponsor \$11 - \$24

PATRON: \$10

Sponsored Student Name: _____

Please make checks payable to the PSU Block and Bridle Club Please return forms to:

**Block and Bridle Club
ATTN: Shelby Dean
324 Henning Building
University Park, PA 16802-3503**

ALL CONTRIBUTIONS ARE APPRECIATED
AND WILL AID IN MAKING THE 102ND
LITTLE INTERNATIONAL AN
OUTSTANDING SHOW! THANK YOU FOR
YOUR SUPPORT!



JUNIOR ROUNDUP

2019 Officer Team

PA Junior Angus Association

President, Elizabeth Voight
Vice-President, Kaitlin Bell
Secretary, Kaylyn Zeigler
Assistant Secretary, Katelyn Taylor
Treasurer, Lydia Brown
Assistant Treasurer: James Voight
News Reporter, Tori Meyer
Assistant News Reporter, Madison Weaver
Directors- (1 year term) David Bell, Michael Butz, Conner Grim, Carrie Rutledge
Directors- (2 year term) Grant Fitzgerald, Samuel Parr, Daniel Rohrbaugh, Madison Weaver

PA Junior Angus Association Meeting January 2019 PA Farm Show News Report

Hello, my name is Tori Meyer. I am the 2019 News reporter for the PA Junior Angus Association. I'd like to update you all as to what is going on in our association. Our first meeting of the year took place at the 2019 PA Farm Show on Saturday January 5th. It was a normal first of the year meeting, but I wanted to highlight a few things of importance.

We elected our club officers for 2019. They are as follows: President- Elizabeth Voight, Vice President- Kaitlin Bell, Secretary- Kaylyn Zeigler, Treasurer- Lydia Brown, Assistant Treasurer- James Voight, News Reporter- Tori Meyer. Our yearly fundraiser is underway. This year we have chosen to sell raffle tickets featuring 5 prizes of certified angus beef strip steaks and some seasonings to accompany them. If you see a Junior be sure to purchase yours!

As in years past, junior members who were interested in competing in showmanship at the 2019 National Junior Angus Show were chosen while at the Farm Show. Daniel Rohrbaugh and Bryce Fitzgerald will be representing Pennsylvania at the 2019 NJAS.

The majority of the meeting was spent on discussing that Pennsylvania will have the honor of hosting the 2020 NJAS, which will be held at the PA Farm Show Complex on July 3rd-11th. The theme for the 2020 NJAS was voted on, it is 2020 Vision: Focus on the Future. The Executive Committee for

the 2020 NJAS consists of Elizabeth Voight, Daniel Rohrbaugh, and Kaitlin Bell. Signups for the 2020 NJAS were announced and members were encouraged to sign Up. Please watch for more information regarding this, because we may be asking for additional help from some of you and other volunteers. If you have been involved in any national shows in the past, and are willing to help, please contact one of the executive committee members.

As the spring show season rolls around, Good Luck to all of the members competing! Stay tuned for more updates.

Respectfully Submitted by your 2019 News
Reporter, Tori Meyer

Advisors

Kyle Grim, 192 Timber Lane, Thomasville, PA 17364, beavercreekangus@gmail.com, 717-324-9869
 Cheryl Fairbairn 789 Cedar Knoll Road, Coatesville, PA 19320, lisnageerfarm01@aol.com, 610-383-9453
 Sue Mayle, 22 Deardorff Road, Dillsburg, PA 17019, jsmayle1198@gmail.com, 717-600-5017
 Christina Nolt, 141 Kurtz Road, New Holland, PA 17557, ritter_christina@yahoo.com
 Cathy Rohrbaugh, 4829 Shaffer Road, Seven Valleys, PA 17360, crohrb01@gmail.com, 717-870-1754
 Lori Voight, 129 Spruce Avenue, Fredericksburg, PA 17026, voightwlv@gmail.com, 717-861-5513

SAVE THE DATE - July 4-6, 2019 PA Angus Breeders' Show Huntingdon, PA

~Ask for PA Angus Assoc. Rate ~

Comfort Inn - 814-643-1600 - \$99.00 - 6/20/19

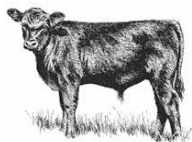
Fairfield Inn - 814-643-3672 - \$99.00 - 6/1/19

Motor Inn - 814-643-1133 - \$85.00 - 6/1/19

Going to
feed the
cows like...

Did anyone
see my
muck boot?





News from the Switch

(aka show winners)

2019 MAJAC – Harrisonburg, Va.

3/9/19 - Junior Steer Show

Judge: Brigham Stewart, Washington, Kansas.

Lindsey Grim, won class 1 steers with BV Ferdinand 76 a May son of BCA Flawless 119, Samuel Parr took second in class 3B steers with Beaver Creek Primo 843, a son of Colburn Primo 5153. Blake Nisewander took first in class 6 bred and owned steers with BFN Free Spirit 184 a son of Whitestone Sherman 524. Second in the same class was Madison Weaver with WSC Bubba 1814, a son of PVF Surveillance 4129. Both steers were then named Champion and Reserve in the Intermediate division. Victoria Meyer was third in class 8 with Vem 582 Chomanche, a son of Connealy Comrade 1385. Placing first in class 9 bred and owned steers was Jared Fessler with HJM Bruno 818, a son of EXAR Classen 1422B. Kolton Grim won class 10 and was named Grand Champion Bred and Owned steer with Beaver Creek Rocky 87 a son of Colburn Primo 5153. Dylan Fessler was named Champion Light Weight Crossbred Steer. Victoria Meyer took a second place in class 14 crossbred steers. Karli Berkheimer won class 16 and was named Champion Medium Weight Crossbred Steer.

The following PA Junior Angus members received top honors in their showmanship divisions.

Champion Senior: Daniel Rohrbaugh, Seven Valleys, Pa.

Reserve Champion Senior: Owen Griffith, Delta, Pa.

Champion Intermediate: Rylee Stockdale, Dayton, Pa.

Champion Novice: Kolton Grim, Thomasville, Pa.

Reserve Champion Novice: Lindsey Grim, Dover, Pa.

2019 MAJAC – Harrisonburg, Va.

3/10/19 - Junior Show

Judge: Brigham Stewart, Washington, Kansas.

Grand Champion Bred and Owned Bull honor was won by Kaitlin Bell with B&R Hammer, a son of Colburn Primo 5153. Blake Nisewander won Reserve Champion Bred and Owned Bull with BFN Freedom 182, a son of BNF Friday 115.

Blake Nisewander won class 27 with his bred and owned heifer BFN Georgina 185 a daughter of SAC Conversation. Grant Cash won first in class 28 with Cash Hailey F840 1568 a daughter of PVF Insight 0129. Cailey Dahlquist won class 29 with CD Proven Queen 815, a daughter of PVF Insight 0129, she was also named Champion Intermediate Division and then named Grand Champion Bred and Owned Heifer. Connor Grim was second in class 30 with Shady Dell

Edella 428, a daughter of PVF Surveillance 4129.

Connor also won class 31 with Shady Dell Scaara 388 another daughter of PVF Surveillance 4129. Second in class 31 was Kaitlin Bell with B&R Elsa's PrimoDonna a daughter of Colburn Primo 5153. Karli Berkheimer won class 34 and was named Reserve Senior Heifer Champion with BK Anita 53 a daughter of Silveriras Style 9303.

Kaylyn Zeigler was second in class 36 owned heifers with Beaver Creek Blackcap 8109 a daughter of Colburn Primo 5153. Samuel Parr was second in class 43 with Beaver Creek Scaara H825 a daughter of Colburn Primo 5153. Lindsey Grim won class 44 with Beaver Creek Edella D839 a daughter of Colburn Primo 5153. Rylee Stockdale won class 45 with Lazy h Bar Forever Lady 885 a daughter of EXAR Lutton 1831. David Bell was second in class 46 with Spring Hope Ark Pride 817 a daughter of PVF Insight 0129. Karli Berkheimer won class 50 with CCC BD Rita E547 a daughter of Womack MVR World Class 414. Lydia Brown was second in class 50 with SCC SCH Phyllis 7108 a daughter of SAV Sensation 5615. Samuel Parr was second in class 51 with Beaver Creek Priscilla 776 a daughter of Colburn Primo 5153.

for immediate release

NEWS

Always eating for two

March 5, 2019

Nutrition matters for each stage of calf development

By Miranda Reiman

How many months out of a year is a mother cow just eating for herself?

Hopefully none, says Janna Kincheloe, North Dakota State University animal scientist.

"The cow should either be lactating or developing a fetus at all times," she says. "If she's not doing that, she's probably open and should be on the trailer headed to town."

That emphasizes the importance of cow herd nutrition year-round.

"Think about what your cows might encounter during gestation," says Amanda Blair, South Dakota State University meat scientist, who ranches with her family near Sturgis. "We encounter swings in forage quality and quantity, changes in the diet throughout the year and definitely weather extremes."



The challenges are unique in each region but they all culminate in an area of study that's gaining the attention of bovine researchers across the country: fetal programming.

It was generally known that cow nutrition affects near-term outcomes like calf size and vigor.

"We've begun to understand the importance of the gestational environment," Blair says, "maximizing offspring potential for a host of production outcomes such as health, reproductive performance and even beef quality."

DNA is a script.

"During development there's actually some flexibility as to which cells can be produced. The environment can modify expression of the DNA script," she says, offering this movie analogy.

True Grit featuring John Wayne looks different than True Grit with Jeff Bridges. Same script, different expression, she says.

"Alterations to the uterine environment can lead to changes in the gene expression," she says. "We think about genes like we can turn them up or down, change the expression or some products of the expression."

But what can be done and when?

"We know that in a forage-based system we're going to have nutrient deficiencies," Blair says.

"Nevertheless, there are still a lot of things we don't know and a lot of conflicting results."

One certainty: it's not as easy as picking one stage to focus on, the scientists say.

A heartbeat is apparent at 21 days gestation. Sex organs develop around 45 to 60 days after conception.

"Survival organs, such as the heart and brain, are going to have an increased priority for nutrients at this stage," Kincheloe says. "If you have a nutrient deficiency during this period, tissues will be affected differently, depending on how necessary they are."

Ovarian follicles develop, the placenta grows, initial muscle cells form—all before the second trimester. If those processes are negatively affected, anything from reproduction to vigor and lifelong performance could suffer. Many pregnancy losses are blamed on intrauterine growth retardation (IUGR), and Kincheloe says inadequate maternal nutrition contributes to that.

A Wyoming study showed cows restricted to 68% nutrient requirements had 40% IUGR incidence and a 20% reduction in fetal weight.

An artificial insemination (AI) study showed mothers restricted to 60% of requirements during the first trimester, then fed 140% for the rest of gestation, had a 40% reduction in the antral follicle count of daughters, which could reduce fertility in that next generation.

"This occurred with no differences in birth weight, no difference in placental characteristics; weight at puberty was similar," she says.

There isn't always a good way to detect the insults. It's often much easier to track performance and quality grade than it is reproductive changes, and fetal programming matters as much to the latter as it does the former.

Blair says a fed steer spends about 40% of its life *en utero*. "Gestation is actually a pretty significant segment of their lives.

"Mid-gestation is a key developmental time point for both muscle and fat," she says, noting the fibers present in the first few months serve as a "scaffolding" for secondary fiber development.

"Livestock species are born with all the muscle fibers they're ever going to have," she notes. "We can certainly make them bigger, and we do this through the process of muscle fiber hypertrophy or growth, but we can never make more."

Yet the evidence is conflicting: supplement nutrition or don't? Add more protein or not? There is a biological effect, but what's the economic implication?

"This is a growing body of research, with more and more being conducted every day that's adding to our knowledge," Blair says. "We don't fully understand the mechanism going on, so there's more work to be done."

Producers should watch for further updates and keep a good read on their cows, because one thing is obvious. When it comes to calf success, she says, "What mom needs matters."

Kincheloe and Blair spoke at Cattlemen's College, Jan. 30, as part of the Cattle Industry Convention and Trade Show in New Orleans.



PENNSYLVANIA LIVESTOCK EVALUATION CENTER

46th Annual Performance Tested Bull Sale - Friday, March 29, 2019, NOON

- 64 Angus bulls are cataloged for the sale—they are listed inside this newsletter, averaging 4.26 pounds/day gain on test after the test was completed at 112 days.
- All bulls are ultrasonically scanned for back fat thickness, ribeye area and marbling, over 50% are Genomic Enhanced pedigrees, and over 50% are Calving Ease!
- All bulls are given a complete breeding soundness and semen evaluation prior to the sale.
- These Angus bulls represent many of the top pedigrees in the beef industry. These are the top 66% of the Angus bulls that were on test.
- Educational exhibits, trade show and purebred cattle exhibits also featured .
- View the videos of the bulls on www.youtube.com. The catalog can be found at www.livestockevaluationcenter.com. A link at this site shows the videos!

Lot #	LEC #	Reg. No.	Birth Date	BW	Bull Owner/Address	Contact Info	Sire	Dam's sire	Adj. 205 wt.	Ave. Daily Gain	Frame Score	Adj. Fat	Adj. Loin Eye Area	Weight/D OA	365 w 205
1	423	19111777	4/15/18	102	Shipman Farms, James Shipman/ Sunbury, PA	570-847-1382-rikers_island@yahoo.com	KF Ten X D619 A314	GAR Ingenuity [DDC]	658	4.79	7.0	*.31	*13	3.82	1462
2	214	19204271	3/1/18	72	Hoffman Cattle Co.- Howard Hoffman/ Annandale, NJ	908-304-8296	Quaker Hill Rampage 0A36 [AMF-CAF-DDF-M1F-NHF-OSF-RDF]	KCF Bennett Southside [AMF-CAF-DDF-M1F-NHF]	802	4.93	6.9	0.44	16	3.85	1404
3	107	19212691	3/4/18	74	Kerr Cattle Co., Mike and Paula Kerr/ Clearfield, PA	814-590-9603-kerrcattleco@gmail.com	MGR Treasure [AMF-CAF-D2F-DDF-M1F-NHF-OHF-OSF-RDF]	SS Objective T510 OT26 [AMF-CAF-DDF-M1F-NHF-OHF-OSF]	796	5.07	6.8	0.41	15.2	4.23	1552
4	109	19102611	4/3/18	70	Beulah Land & Cattle, Mike Kline/ McVeytown, PA	717-250-6188-mkline@selectsirepower.com	Deer Valley Old Hickory [AMF-CAF-D2F-DDF-M1F-NHF-OHF-OSF-RDF]	SAV Pioneer 7301 [AMF-CAF-D2F-DDF-M1F-NHF-OHF-OSF]	875	4.71	7.0	*.36	*12.5	4.26	1553
5	204	19221088	2/1/18	82	Alexis Cash/ York, PA	717-881-0205-ADCash22@comcast.net	RB Absolute Advantage [OSF]	EXAR Upshot 0562B [AMF-CAF-D2F-DDF-M1F-NHF-OHF-OSF]	608	4.93	6.1	0.38	13.7	3.45	1248
6	201	19221087	1/13/18	92	Alexis Cash/ York, PA	717-881-0205-ADCash22@comcast.net	RB Absolute Advantage [OSF]	SAV Final Answer 0035 [AMF-CAF-D2F-DDF-M1F-NHF-OHF-OSF-RDF]	692	4.66	6.3	0.26	15.3	3.55	1290
7	205	19221093	1/12/18	93	Alexis Cash/ York, PA	717-881-0205-ADCash22@comcast.net	EXAR Spread 5767B [AMF-CAF-D2F-DDF-M1F-NHF-OHF-OSF]	VAR Ranger 3008	609	4.71	5.7	0.36	13.4	3.23	1169
8	301	19203417	2/18/18	90	Harry & Emily Blessing/ Seven Valleys, PA	717-586-6857-blessing10707@hotmail.com	WR Journey-1X74 [AMF-CAF-D2F-DDF-M1F-NHF-OHF-OSF]	AAR Ten X 7008 SA [AMF-CAF-D2F-DDF-M1F-NHF-OHF-OSF]	661	4.71	6.0	0.3	14.7	3.39	1238
9	230	19182600	2/23/18	73	Seefeldt Angus, Gary Seefeldt/ Port Allegany, PA	814-598-7886-ghseefeldt@gmail.com	Seefeldt Ingenuity 304 [DDF]	GAR Ingenuity [DDC]	677	4.63	6.7	0.32	16	3.62	1323
10	313	19145558	3/15/18	68	Ebony Farm, Lance & Sheila Kauf/ West Sunbury, PA	724-894-2392-bootskauf@zoominternet.net	Baldrige Colonel C251 [AMF-CAF-D2F-DDF-M1F-NHF-OHF-OSF]	Whitestone Conviction 4010	686	4.87	5.4	0.39	16.5	3.71	1367
11	429	19095280	3/23/18	85	Misty Oak Farm- Emanuel Stoltzfus/ Honeybrook, PA	610-273-3974	Deer Valley Testament 5202 [AMF-CAF-D2F-DDF-M1F-NHF-OHF-OSF-RDF]	Roseda Objective 3J15 U055 [DDF-OSF]	578	4.50	5.8	*.24	*13.6	3.56	1336
12	403	19161566	3/17/18	82	Grant Cash/ York, PA	717-818-7995-ChadCash2@comcast.net	RB Absolute Advantage [OSF]	SAV Bismarck 5682 [AMF-CAF-D2F-DDF-M1F-NHF-OHF-OSF-RDF]	575	4.67	4.7	0.24	12.8	3.16	1167
13	221	19221092	1/16/18	82	Kohr Farms, James Kohr/ York, PA	717-873-1001-jim@kohrfarms.com	MGR Treasure [AMF-CAF-D2F-DDF-M1F-NHF-OHF-OSF-RDF]	VAR Generation 2100 [AMF-CAF-D2F-DDF-M1F-NHF-OHF-OSF]	684	4.65	5.5	0.53	13.4	3.46	1259
14	222	19221091	1/18/18	82	Kohr Farms, James Kohr/ York, PA	717-873-1001-jim@kohrfarms.com	EXAR Spread 5767B [AMF-CAF-D2F-DDF-M1F-NHF-OHF-OSF]	GAR Prophet [AMF-CAF-D2F-DDF-M1F-NHF-OHF-OSF-RDF]	651	4.21	5.9	0.44	13.7	3.38	1226
15	206	19221089	1/24/18	82	Grant Cash/ York, PA	717-818-7995-ChadCash2@comcast.net	VAR Foreman 3339 [AMF-CAF-D2F-DDF-M1F-NHF-OHF-OSF]	EXAR Upshot 0562B [AMF-CAF-D2F-DDF-M1F-NHF-OHF-OSF]	607	4.49	5.9	0.35	13.9	3.48	1257
16	132	19059532	1/19/18	80	Weaverland Valley Farms, Brady Ebersole/ New Holland, PA	717-468-1553-weaverland@frontiernet.net	Baldrige Bronc [AMF-CAF-D2F-DDF-M1F-NHF-OHF-OSF-RDF]	TC Freedom 104 [AMF-CAF-DDF-M1F-NHF-OHF-OSF]	854	4.96	5.9	0.72	15.1	3.95	1448
17	330	19176059	2/20/18	72	Voight Family Farm, Wilhelmina Voight/ Fredericksburg, PA	717-821-0699-delvoight@gmail.com	RB Absolute Advantage [OSF]	Hoover Dam [AMF-CAF-D2F-DDF-M1F-NHF-OHF-OSF]	753	4.38	5.4	0.49	15.4	3.48	1270
18	215	19177149	3/3/18	82	Hoffman Farms- Scott Hoffman/ Catawissa, PA	570-799-5486	RB Tour Of Duty 177 [AMF-CAF-D2F-DDF-M1F-NHF-OHF-OSF-RDF]	KF Hoover Dam Y108 U808	677	4.13	5.5	0.39	13.3	3.55	1301
19	216	19117090	3/5/18	70	AJK Ebony Acres, Adam & Jennifer Kauf/ Woodbury, PA	814-766-2235-acwkauf@yahoo.com	MC Resource 5004 [OSF]	Benfield Substance 8506 [AMF-CAF-D2F-DDF-M1F-NHF-OHF-OSF]	715	4.46	5.4	0.58	15.2	3.93	1443
20	334	19081357	3/3/18	79	Work Land and Cattle Co./ Smock, PA	724-880-5654	Stevenson Turning Point [AMF-CAF-D2F-DDF-M1F-NHF-OHF-OSF]	VAR Reserve 1111 [AMF-CAF-DDF-M1F-NHF]	586	4.49	5.9	0.32	13.6	3.41	1254
21	102	19131194	3/21/18	81	Bar-Z-Angus, Scott M Barzak DVM/ Conneaut Lake, PA	814-573-0130-sbarzak@yahoo.com	HA Cowboy Up 5405 [AMF-CAF-D2F-DDF-M1F-NHF-OHF-OSF]	Sitz Upward 307R [AMF-CAF-D2F-DDF-M1F-NHF-OSF]	718	4.10	6.0	0.41	13.4	3.81	1404
22	134	19059525	1/14/18	69	Weaverland Valley Farms, Larry & Barbara Weaver/ New Holland, PA	717-468-1553-weaverland@frontiernet.net	Basin Advance 3134 [AMF-CAF-D2F-DDF-M1F-NHF-OHF-OSF]	GAR Anticipation [AMF-CAF-D2F-DDF-NHF-OHF-RDF]	792	4.41	6.2	0.54	14.1	3.54	1303
23	405	19228544	4/14/18	56	Tuckaway Angus, Susan Godfrey/ Bradford, PA	814-363-9885-godfreysusan@yahoo.com	SF Speedway A187 [AMF-CAF-D2F-DDF-M1F-NHF-OHF-OSF]	Justamere561X Washington602B	671	4.25	6.3	*.31	*11	3.33	1220
24	335	19222138	3/8/18	70	Work Land and Cattle Co./ Smock, PA	724-880-5654	Stevenson Turning Point [AMF-CAF-D2F-DDF-M1F-NHF-OHF-OSF]	Boyd On Target 1083 [CAC-AMF-DDF-M1F-NHF-OHF-OSF]	633	4.69	6.1	0.36	14.7	3.47	1276
25	115	19217291	1/15/18	76	Mitchell Farms, Matthew Mitchell/ Reinholds, PA	717-336-5459-mitchellfarms@dejazzd.com	Connealy Final Product [AMF-CAF-D2F-DDF-M1F-NHF]	Connealy Final Solution [AMF-CAF-DDF-M1F-NHF-OHF]	684	4.66	5.8	0.4	13.7	3.62	1311
26	108	19100926	1/24/18	75	Beulah Land & Cattle, Mike Kline/ McVeytown, PA	717-250-6188-mkline@selectsirepower.com	TEX Playbook 5437 [AMF-CAF-D2F-DDF-M1F-NHF-OHF-OSF-RDF]	HF Kodiak 5R [DDF-M1F-OHF]	843	4.26	5.9	0.41	14.7	3.79	1393
27	217	19182487	3/16/18	70	AJK Ebony Acres, Adam & Jennifer Kauf/ Woodbury, PA	814-766-2235-acwkauf@yahoo.com	Angus Hill Steadfast 854B [AMF-CAF-D2F-DDF-M1F-NHF-OHF-OSF]	Ebony BM 042-1-906	705	4.27	6.0	0.48	13.9	3.74	1378
28	131	19176060	1/16/18	82	Voight Family Farm, James E. Voight/ Fredericksburg, PA	717-821-0699-delvoight@gmail.com	RB Absolute Advantage [OSF]	Summitcrest Complete 1P55 [AMF-CAF-D2F-DDF-M1F-NHF-OHF-OSF-RDF]	751	3.67	6.0	0.38	15.4	3.49	1281
29	135	19059527	1/29/18	66	Weaverland Valley Farms, Larry & Barbara Weaver/ New Holland, PA	717-468-1553-weaverland@frontiernet.net	Quaker Hill Rampage 0A36 [AMF-CAF-DDF-M1F-NHF-OSF-RDF]	Deer Valley All In [AMF-CAF-D2F-DDF-M1F-NHF-OHF-OSF-RDF]	767	4.18	5.7	0.35	14.5	3.47	1271
30	110	19159246	1/16/18	78	JK Cattle Co., Jim & Jolene Kuhn/Conneautville, PA	605-450-0482-jkcattle123@yahoo.com	Colburn Primo 5153 [OSF]	B/R New Day 454 [DDC-AMF-CAF-M1F-NHF-OHF]	687	4.61	5.8	0.56	12.3	3.51	1277
31	120	19186585	2/12/18	75	Rains Angus, Dale & Chance Rains/ Mercer, PA	724-854-7200-rainsangus@zoominternet.net	Musgrave Invision [DDF]	WMR Timeless 458 [AMF-CAF-DDF-M1F-NHF-OHF]	767	4.29	6.5	0.66	13.3	3.93	1433
32	407	19204270	3/1/18	75	Hoffman Cattle Co.- Howard Hoffman/ Annandale, NJ	908-304-8296	WHITESTONE ADVOCATE	CONNEALY BLACK GRANITE	689	5.12	5.0	0.31	13.7	3.35	1221
33	329	19218861	2/23/18	82	River Bend Farm, Corne Vogelaar/ Far Hills, NJ	908-234-1377-corne@rbfangus.com	SAV Ten Speed 3022 [AMF-CAF-D2F-DDF-M1F-NHF-OHF-OSF]	Basin Excitement [AMF-CAF-D2F-DDF-M1F-NHF-OHF-OSF]	680	4.26	5.7	0.42	15.4	3.44	1257
34	322	19182601	3/8/18	78	Seefeldt Angus, Gary Seefeldt/ Port Allegany, PA	814-598-7886-ghseefeldt@gmail.com	Seefeldt Ingenuity 304 [DDF]	Deer Valley All In [AMF-CAF-D2F-DDF-M1F-NHF-OHF-OSF-RDF]	624	3.92	6.1	0.31	14.2	3.38	1240
35	218	19225827	2/18/18	64	Knapp Time Farm, Michael Knapp/ Hooversville, PA	814-659-9189-knappm9819@gmail.com	KTF Cash K410	SAV Bismarck 5682 [AMF-CAF-D2F-DDF-M1F-NHF-OHF-OSF-RDF]	689	4.46	5.7	0.51	14.1	3.70	1351
36	101	19185221	3/22/18	84	Bar-Z-Angus, Scott M Barzak DVM/ Conneaut Lake, PA	814-573-0130-sbarzak@yahoo.com	HA Cowboy Up 5405 [AMF-CAF-D2F-DDF-M1F-NHF-OHF-OSF]	Bar-Z Thunder Lad 128	725	4.00	6.2	*.33	*12.5	3.84	1417
37	319	19225751	3/14/18	68	Mitchell Farms, Matthew Mitchell/ Reinholds, PA	717-336-5459-mitchellfarms@dejazzd.com	SAV Bismarck 5682 [AMF-CAF-D2F-DDF-M1F-NHF-OHF-OSF-RDF]	SAV Net Worth 4200 [AMF-CAF-DDF-M1F-NHF-OHF-OSF]	652	4.54	6.1	0.39	14.6	3.70	1370
38	125	19056031	1/8/18	76	Shipman Farms, James Shipman/ Sunbury, PA	570-847-1382-rikers_island@yahoo.com	GAR Early Bird [DDF]	Shipman 1201 Vintage	677	4.41	5.5				

RSF Bella

Outstanding pedigree and all around impressive female

Lot # 23 at PA Finest Female Sale

DOB: 2/24/17

AAA 19052010

Bred on 7/17/18 to Rains
Consensus BRLO878...
Due just 1 week after the
sale

DAM: Rains Miss Charlie DLDJR

SIRE: Connealy Final Product



TWO FANCY SHOW HEIFERS

RSF Keziah

Lot # 17

AAA 19243966

DOB: 1/17/18

SIRE: SAC CONVERSATION

DAM: RSF JENNY

PERFECTLY MADE HEIFER



RSF Penny

Lot # 16

AAA 19243965

DOB: 3/13/18

SIRE: RAINS CONSENSUS

DAM: RSF BEAUTY

EXCELLENT PEDIGREE



More information- Mervin
Claypoole- 724-664-7933

Lot 10 - EBONY COLONEL 605-803

16.5 sq inches REA - #1 of all Breeds on Test

Sire: Baldrige Colonel C251

Dam: Ebony Confidence 403-605

Maternal Grand Sire: Connealy Confidence 0100

A rare combination of Calving Ease, Growth, Docility, Maternal & Carcass Value

CED+11 YW+109 DOC+26 Milk+28 MB+.53 RE+1.06 \$W+\$66.10 \$B+140.84

Ribeye EPD of +1.07 ranks in the top 2% of Angus breed

205 adj wt – 686 lbs 365 adj wt -1369 lbs

The first “COLONEL” son ever offered in the Pa Bull Test Sale

Consigned by Ebony Farm, Lance & Sheila Kauf, West Sunbury, Pa.

724-894-2392

bootskauf@zoominternet.net

Endless Mountains Agricultural and Environmental Services

Nutrient Management and Manure Management Planning Services

If you are in need of Nutrient Management or Manure Management Planning, I am booking for the 2019 Crop year.

You may reach me at 570-833-4482 (H/O) or 570-905-4378 (C); geneval1@frontier.com

Eugene Trowbridge, contact

PA Certification: 846-NMC



Beaver Creek Angus Bulls For Sale Private Treaty



BEAVER CREEK ADVANTAGE D819

SIRED BY: RB ABSOLUTE ADVANTAGE

TOP 2% OF BREED FOR RIB EYE AREA

TOP 5% OF BREED FOR \$B

BW	WW	YW	MILK	MARB	REA	\$B
+9	+56	+108	+30	+.46	+1.11	\$169.45

30 Yearling Bulls

Selling First Come First Serve

Buy Now and Pick Up April 15!!

CALL Kyle Grim 717-324-9869
For Catalog or Appointments!!!!

BEAVER CREEK SKY HIGH 875



PRE WEAN WDA 3.63

BEAVER CREEK GRANITE 848



PRE WEAN WDA 3.64

BEAVER CREEK SKY HIGH D824



PRE WEAN WDA 3.58

BEAVER CREEK BULLS ARE....

Sound Made & Heavy Muscled
Deep Bodied & Eye Appealing
Backed By Super Good Cows
The Kind that will Add Pounds
Guaranteed to be Fertile & Breed
Performance Tested Pre Weaning
Performance Tested Post Weaning



**BEAVER CREEK WAS RECOGNIZED
AS PA BREEDER OF THE YEAR**

PENNSYLVANIA FARM SUPPLIERS & RESOURCES

717-548-1351
Fax 717-548-0376

1664 Furniss Rd.
Drumore, PA 17518

FREY'S LIVESTOCK SUPPLY

*Show Supplies • Livestock Trailers
Sharpening & Repair • Show Feeds
Club Calves • Registered Angus Cattle*

www.freysupply.com

email: ffrey@freysupply.com

JDH Cattle Company

Registered Angus Cattle



Custom Fitting Show/Sale Cattle
Herd Consulting-Sale Ring Service
Livestock Hauling • Hoof Trimming Service
Dealer For Vita Farm & Sure Champ



John & JoAnn D. Hausner
5550 Pine Hill Rd. • Dover, PA 17315
717-292-3053 Home • 717-968-0971 Cell

When It Comes To Marketing
We Don't Sit Around Waiting For
The Cows To Come Home
Call Us For Results



Auctioneer - Sale Management - Private Treaty Sales
Photography/Video - Genetic Consulting



Ken Brubaker
540/908-5799
ken@brubakersales.com
www.brubakersales.com



NO BULL TOO BIG OR NASTY ZIMMERMAN'S CUSTOM FREEZING

Semen Freezing Since 1983
Semen Fertility Evaluations
www.semenfreezing.com

Harry Zimmerman Ph. 717-355-2048
131 Redwell Rd. Cell 717-940-1430
New Holland, PA 17557 Fax 717-354-9372

Endless Mountains Agricultural and Environmental Services

6290 State Route 3001
Meshoppen, PA 18630

Eugene A Trowbridge II
President

Phone: 570-833-4482
Cell: 570-905-4378

Quality Livestock Equipment

372 Puseyville Road, Quarryville, PA 17566

Office: 717.786.2146
Fax: 717.786.7509
Cell: 717.801.6685
freybrothers@epix.net

Visit us on the web at: www.freybrothersinc.com

Accelerated Genetics is focused on being the
producer's trusted first choice!



Steve McPherson
Regional Beef Specialist
336-639-4631 | smcpherson@accelgen.com

Kyle Grim, Thomasville, PA Ph: 717-324-9869
Travis Book, New Castle, PA Ph: 724-944-0670

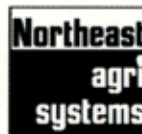
BORN 1941 | 1-800-451-9275 | www.accelgen.com

EASTERN STATES LIVESTOCK SYSTEMS

Office: (800) 242-3240
Cell: (814) 977-0848
Home: (814) 735-4554

1563 Oak Grove Road
Breezewood, PA 15533

Frank "Butch" Otto
easternstateslivestock.com



Northeast Agri Systems, Inc.
Flyway Business Park
139A West Airport Road
Lititz, PA 17543
Phone: (717) 569-2702
Fax: (717) 569-9748
www.neagri.com

neagri.com

Matt Mitchell
Sales - Estimating - Purchasing
mmitchell@neagri.com
cell: (717) 682-1027

Systems, Design,
Supplies and Service for
Poultry and Livestock Farming
Toll Free: (800) 673-2580

authorized  distributor since 1982

**YOUR BUSINESS CARD
AD HERE
FOR ONE YEAR
\$100**

CONTACT THE SECRETARY!

PENNSYLVANIA ANGUS ASSOCIATION BREEDERS



SUNRISE CLUB CALVES

Paul & Beth Wingard
(814) 782-3992

www.clubcalves.com/sunriseclubcalves.htm

6667 Rt. 322 Shipperville, PA 16254

Visitors Always Welcome



Penn State University Beef Center

142 Orchard Rd. University Park, PA 16802
Beef Center: (814) 863-7611

Wendall Landis: (814) 280-7611 email: wlandispsu@gmail.com
Mitch Stephens: (814) 762-4762 email: mjs5230@psu.edu
Brooke Milbrandt: (814) 558-6186 email: bmilbrandt@gmail.edu

Visitors Welcome to our Farm and Campus at all Times!



Brandon & Jackie Overdorff

645 Cherry Tree Road
Cherry Tree, PA 15724

overdorff.angus@gmail.com

Phone: 814-743-5393

[f overdorffangus](https://www.facebook.com/overdorffangus)

Grass Based Registered Angus Genetics

Mt. Pisgah Angus

Registered Angus Cattle

1603 Pisgah Rd.
Troy, PA 16947

570-297-4206
Fax 570-297-9910



KAREN GILLILAND

E-mail: kgquilter@hotmail.com



McKean Bros. Angus

McKean Family
193 East Zahniser Road
Mercer, PA 16137
(724) 475-4450

peggymckean@windstream.net

**Annual Bull Sale every APRIL,
watch for details!**

HJM Cattle Company



Reg. Angus, Maine - Anjou & Club Calves

Kevin, Karen Fuls
and Family

Heather, Keith Fessler
and Family

C: 610-389-5289

H: 610-693-5009

Robesonia, PA 19551

WORK LAND & CATTLE
2 WORK PARKWAY
UNIONTOWN, PA 15401



WATCH FOR OUR
ANNUAL PRODUCTION
SALE

Bob & Pam Work
Keith & Linda Rooker
Bob: 724-880-5654 • Keith: 412-691-4913
Kevinrooker@yahoo.com

EBONY FARM – REGISTERED ANGUS

Featuring

“Whitestone Conviction 4010” AAA # 17852403

Lance & Sheila Kauf
111 Manuel Road
West Sunbury, Pa 16061

bootskauf@zoominternet.net 724-894-2392

Lisnageer Farm



789 Cedar Knoll Rd.
Coatesville, PA 19320
610.383.9453
Bill & Cheryl Fairbairn



Registered Angus Cattle
“Butts and Guts on Grass”



HERR
ANGUS FARMS

Dennis & Dottie Byrne

25 Airport Road
Nottingham, PA 19362

Phone: (610) 932-5977
Cell: (610) 662-6102

Email: dennis.byrne@herrs.com

PENNSYLVANIA ANGUS ASSOCIATION BREEDERS



KNAPP TIME FARM

MICHAEL & DEBBIE KNAPP
258 School Road
Hooversville, PA 15936
(814) 754-9968

QUALITY HOME GROWN PRODUCTS



Salansky Angus

Paul Salansky
286 California Drive
Coal Center, PA 15423
Cell: 412-997-7688

Email: salanskyangus@gmail.com

PAS TRUE GRID



We Breed the Best and
Forget the Rest!



REGISTERED ANGUS

Larry & Barbara Weaver 717-354-7477
641 Spruce Road Cell: 717-468-1553
New Holland, PA 17557 Email: weaverland@frontiernet.net

COLE'S ANGUS

REGISTERED ANGUS SINCE 1959

57 LANIK ROAD
BENTLEYVILLE, PA. 15314
Phone: 724-244-9658
412-861-6011

E-MAIL: kayboo2@yahoo.com

BREEDING ONLY TO THE TOP A-I SIRES

CERTIFIED • ACCREDITED HERD



Bulls For Sale

- Registered Angus Cattle
- Using The Top AI Sires

A&L ANGUS

6483 Brush Valley Rd.
Rebersburg, PA 16872



Amos Yoder
(814) 349-8020

ENDLESS MOUNTAINS ANGUS FARM



Registered Black Angus
Gene & Valerie Trowbridge and Family
570-833-4482
emangusfarm@frontier.com
6290 State Route 3001
Meshoppen, PA 18630

Gaylan - Summit Angus Farms

*Your Northeast Connection
for Commercial Bred Heifers*

Frank "Butch" Otto

Cell (814) 977-0848
Office (800) 242-3240
Home (814) 735-4554

WindSwept Angus LLC

Premium Grass Fed - Grass Finished Beef

Steven Semkowicz

203-803-7809

semkowicz@hotmail.com

Cattle for Sale

www.windsweptangus.com

Quiet Heart Farm



Registered Black Angus

Bill & Eshton Ritenour
724-455-8309 Barn
507-384-2870 Cell

P.O. Box 47
Melcroft, PA 15462



OCTORARO ANGUS



Pure breeder type Angus
Seed saver genetics for over 45 years

Samuel J. Wylie, III & Sherrill
2336 Adams Run Road
New Paris, PA 15554
814-839-0116
Cell: 814-889-9196
octoraro@nb.net
www.octoraroangus.com

PENNSYLVANIA ANGUS ASSOCIATION BREEDERS



Oak Hill Farm
Breeding Better Beef since 1985



Oren W. Smith

37 Old Trails Road
Avella, PA 15312

724.825.0308 (mobile)
724.345.8379 (office)

ohangus@pulsenet.com
oakhill4angus.com



Em Brook Angus

RICK (814) 937-7867
RICHIE (814) 977-7696
RYAN (814) 502-0489
info@embrookangus.com

2970 HELIXVILLE RD.
SCHELLSBURG, PA 15559
(814) 733-4552

www.embrookangus.com



Gene Nolt
717-669-7296

Ryan Nolt
717-808-9065

REGISTERED
ANGUS

143 KURTZ RD NEW HOLLAND, PA 17557



Jamie, Jerry, Ethan &
Olivia Brozman

Ned & Linda Hower

Email
JustEnuffAngus@gmail.com

354 Townshipline Rd. Nazareth, PA 18064
Home (610)-837-3866 Cell (484)221-3455
Registered Angus Cattle Tame Show Calves
Website/Facebook – www.justenuffangus.com



Jake & Becky Yohe
Phone: (302) 893-9891

Dennis & Dottie Byrne
Phone: (610) 662-6102

230 McCoury Road
Nottingham, PA 19362



**YOUR BUSINESS CARD
AD HERE
FOR ONE YEAR
\$100
CONTACT THE SECRETARY!**



30 Day Cattle Blood Pregnancy Test

- Rapid results
- Safe for embryo
- Accurate
- Inexpensive
- Less Invasive
- Bio-secure

Call for blood sampling kit: 717-354-2178
www.precisiond.com

**NICHOLS
GRAND VIEW FARM**

Registered Angus Cattle

814-684-5790 gvfkrm@yahoo.com

Donnie 814-934-7047 Karen 814-934-4977 John 814-934-9457 William 814-207-6730

5415 Nichols Road, Tyrone, PA 16686



LOWRY'S FARM
REGISTERED ANGUS
290 LYNN PORTAL ROAD
WASHINGTON, PA 15301

JAMES LOWRY
OWNER

(724) 345- 3716
JLOWRY290@VERIZON.NET



GNDangus

Gerald &
Denise Segelstrom
Registered Angus Cattle

1035 McGuffey Road
West Alexander, PA 15376
724-663-0125 • gndangus@verizon.net